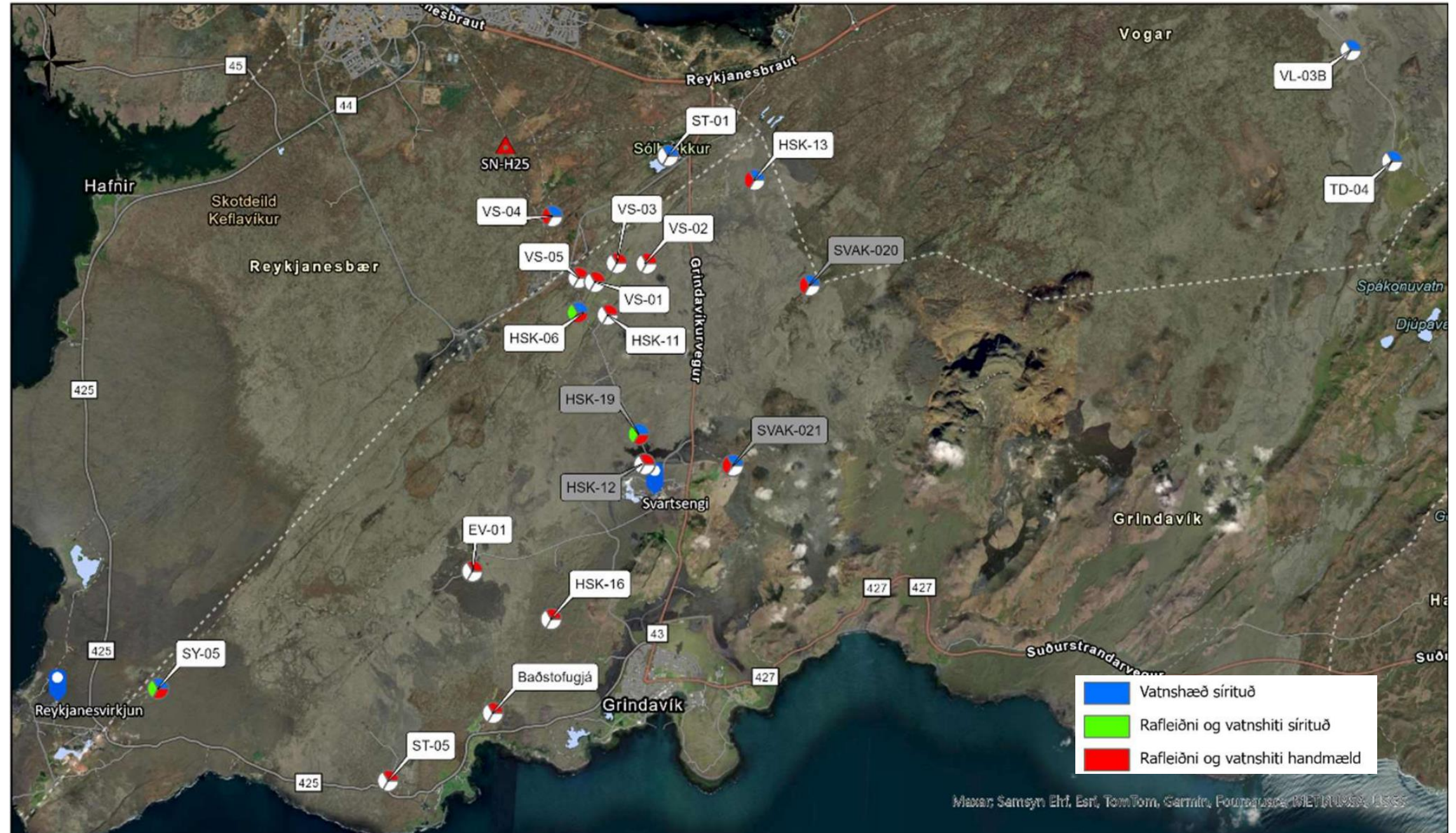


7.04.2025

VAFRÍS

Áhrif eldsumbrota á neysluvatnsból Reynsla HS Orku

Valdís Guðmundsdóttir
Project Manager

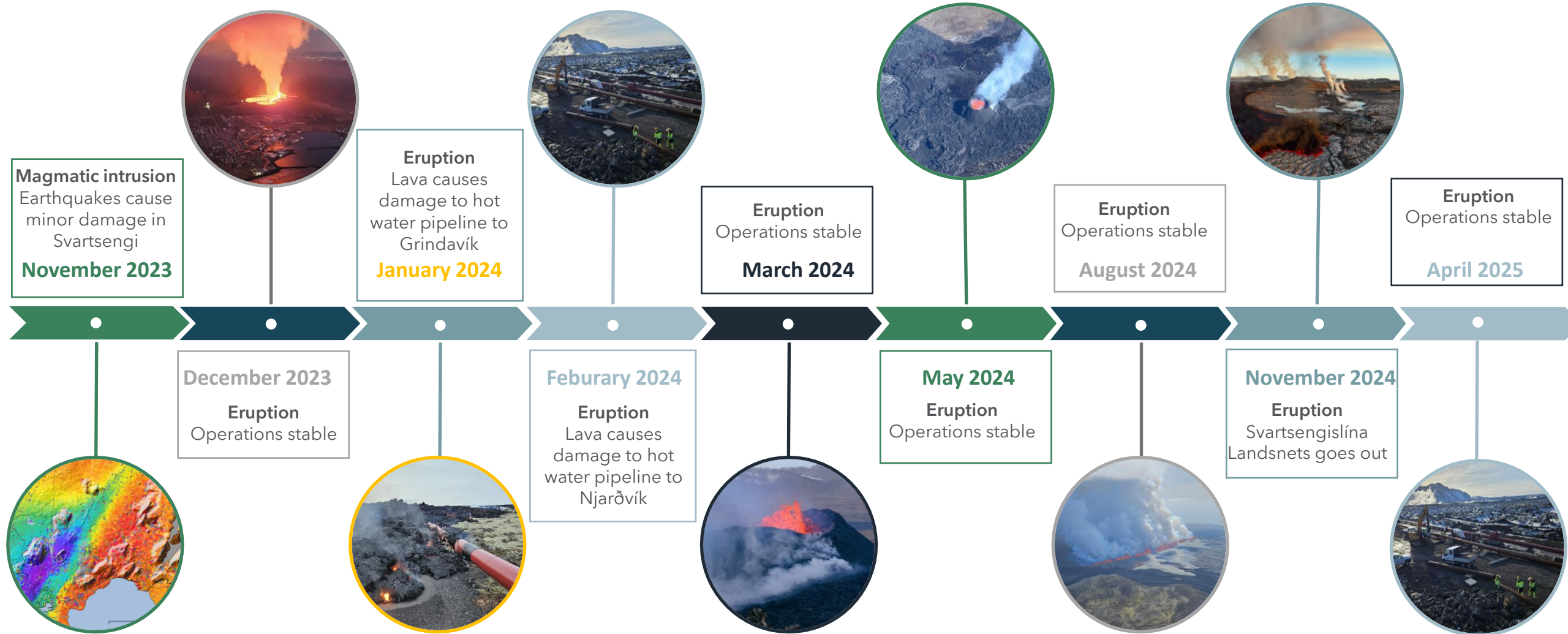


Yearly full chemical sampling

Temperature(°C)	Al
pH/°C	As
Conductivity (μS/cm)	Ba
CO ₂	Cd
H ₂ S	Co
NH ₃	Cr
B	Cu
SiO ₂	Fe
Na	Hg
K	Mn
Mg	Mo
Ca	Ni
F	Pb
Cl	Sr
Br	V
SO ₄	Zn
	TDS
	δD
	δ ¹⁸ O

RKA

Volcanic and seismic activity 2023-2025

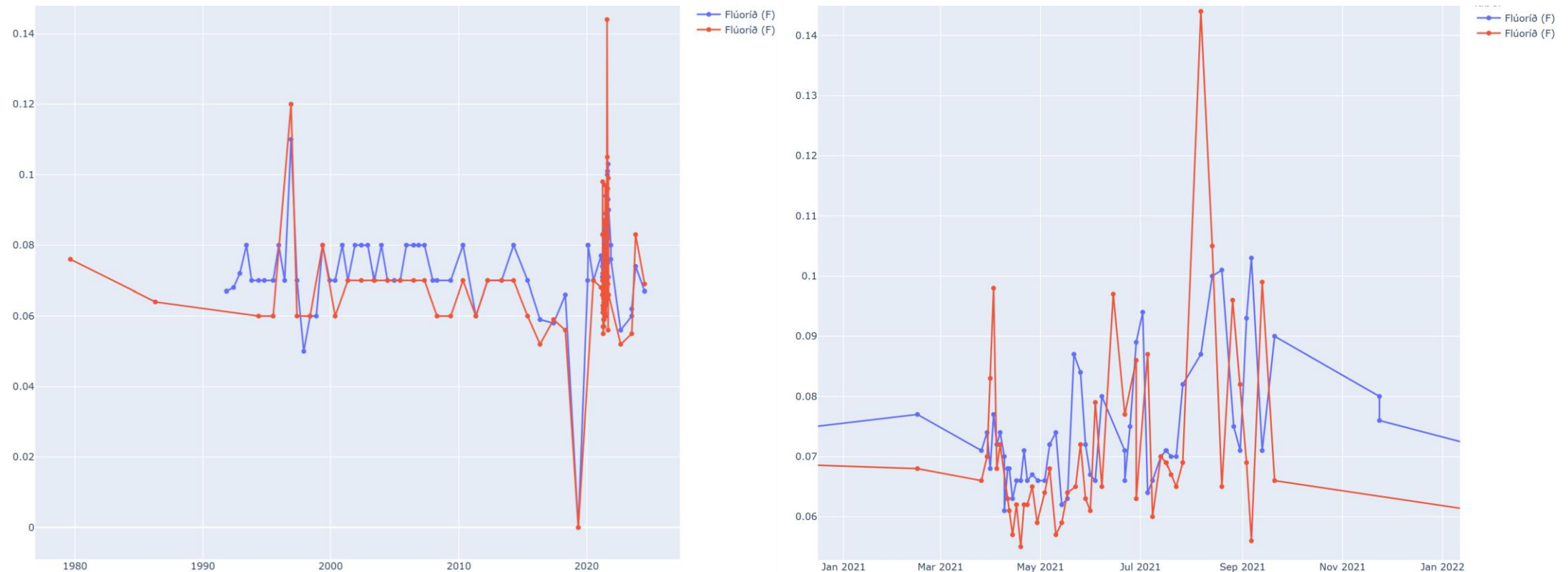




Fagradalsfjall eruption

Daily samples of Water from Lágur

Focused on fluoride analysis – Limit is 1.5



Fagradalsfjall eruption

Online loggers installed

Intended to capture any change that could be due to volcanic contamination

- Fluoride
- Temperature
- pH
- Conductivity
- Turbidity



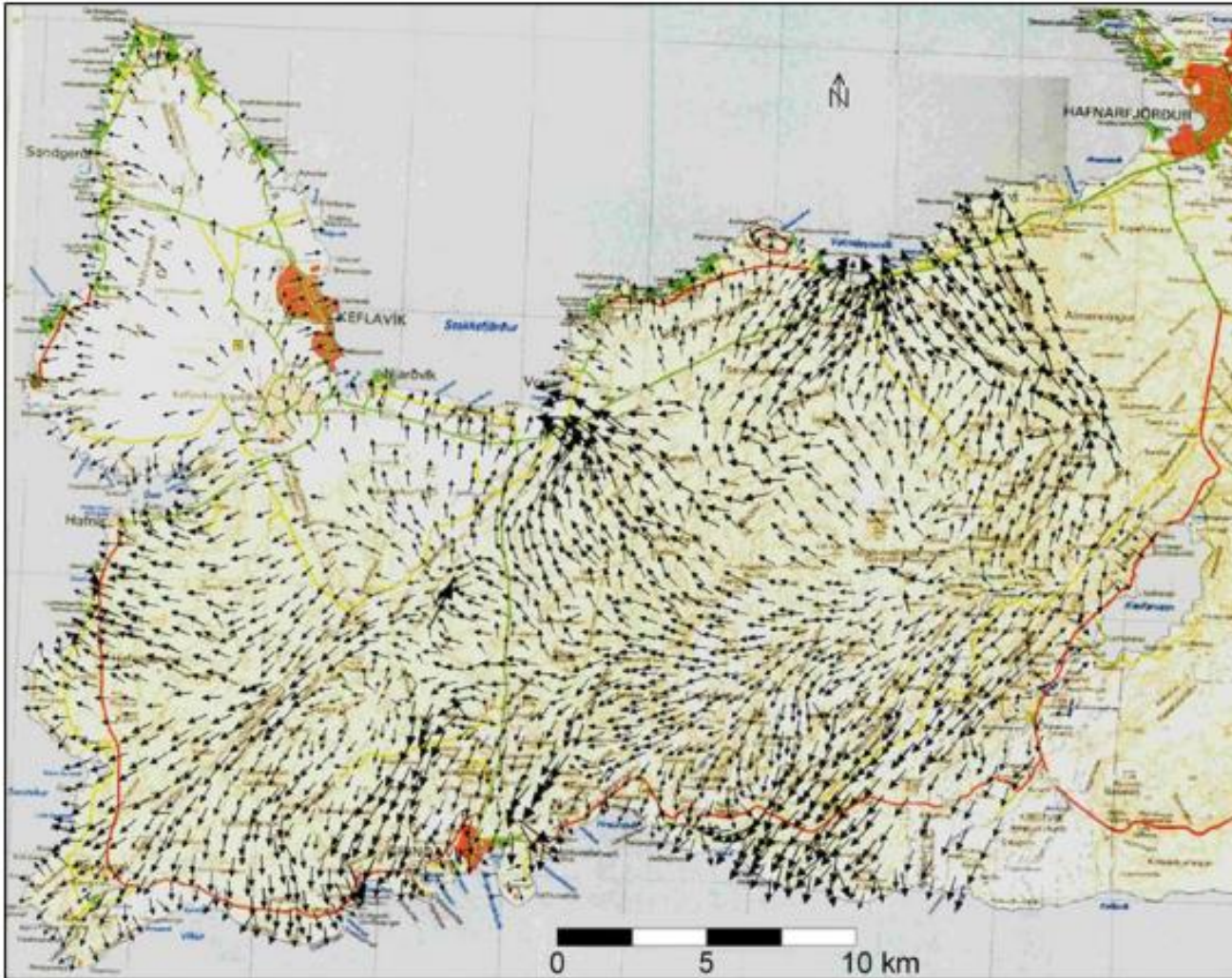
Sundhnúkar eruption



Online loggers don't show any noteworthy changes in the water source at Lágar

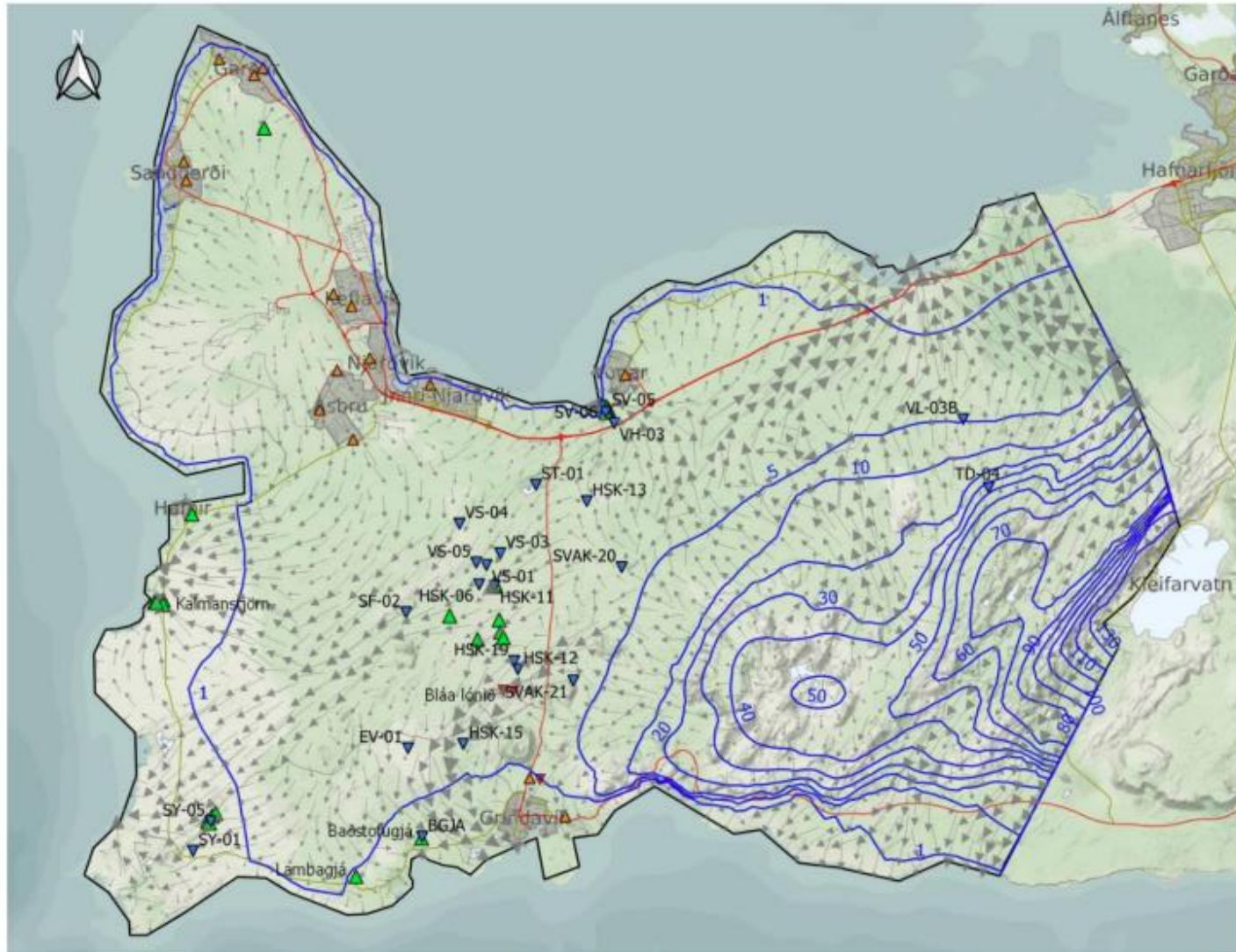
Has taught us a lot about groundwater in Reykjanes

Sundhnúkar eruption



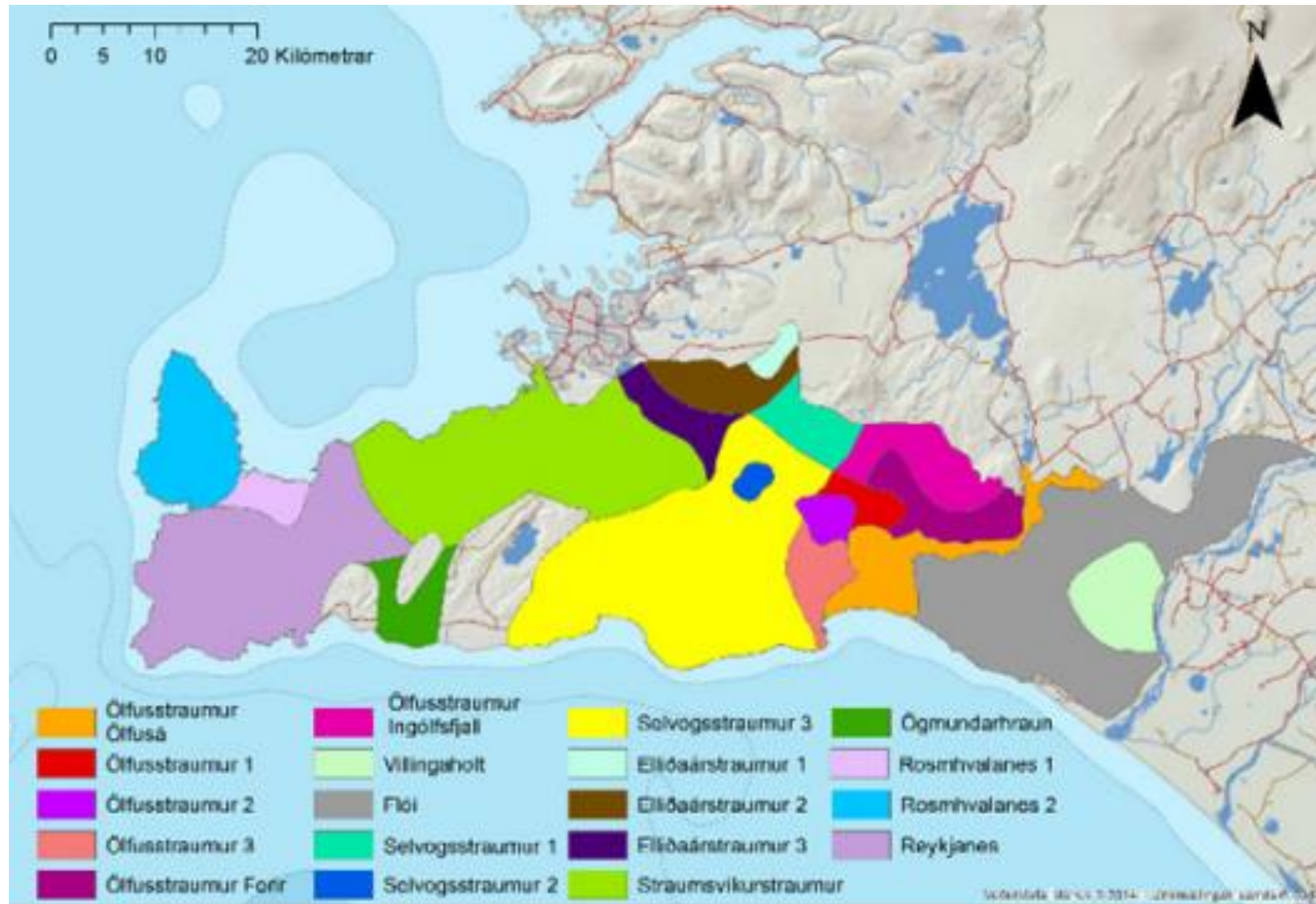
Flow paths are probably quite different from what has previously been put forward

Sundhnúkar eruption

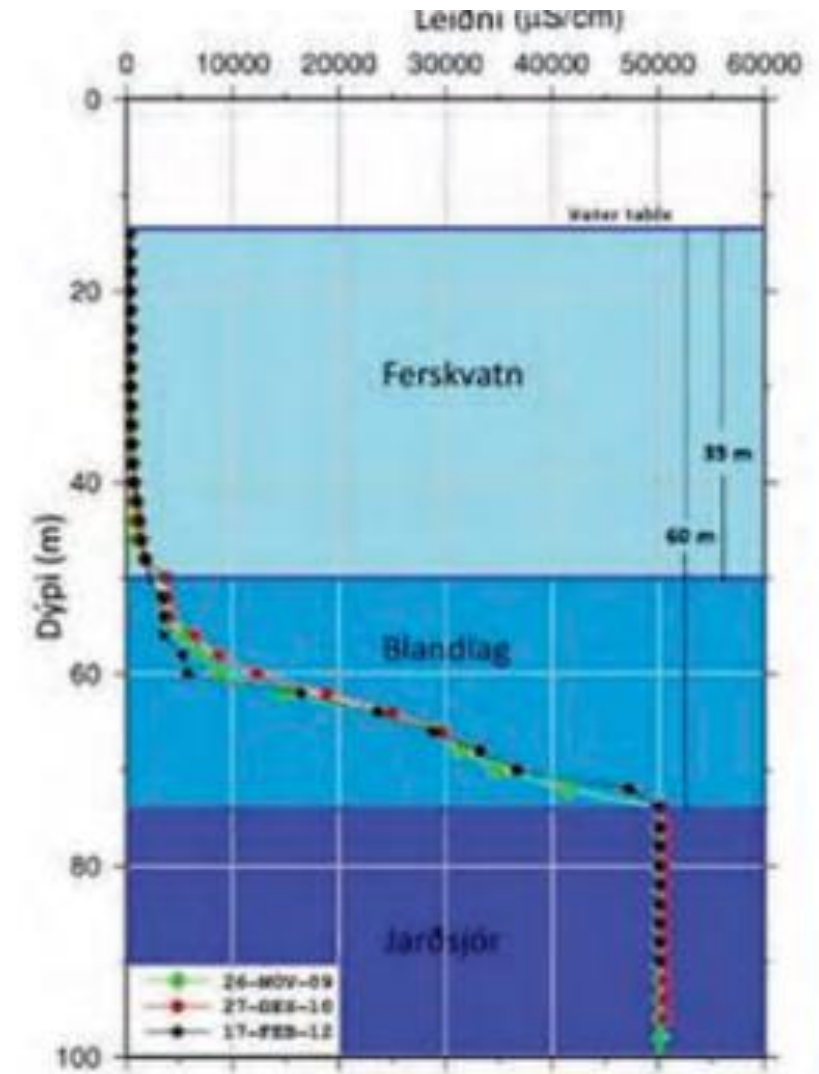
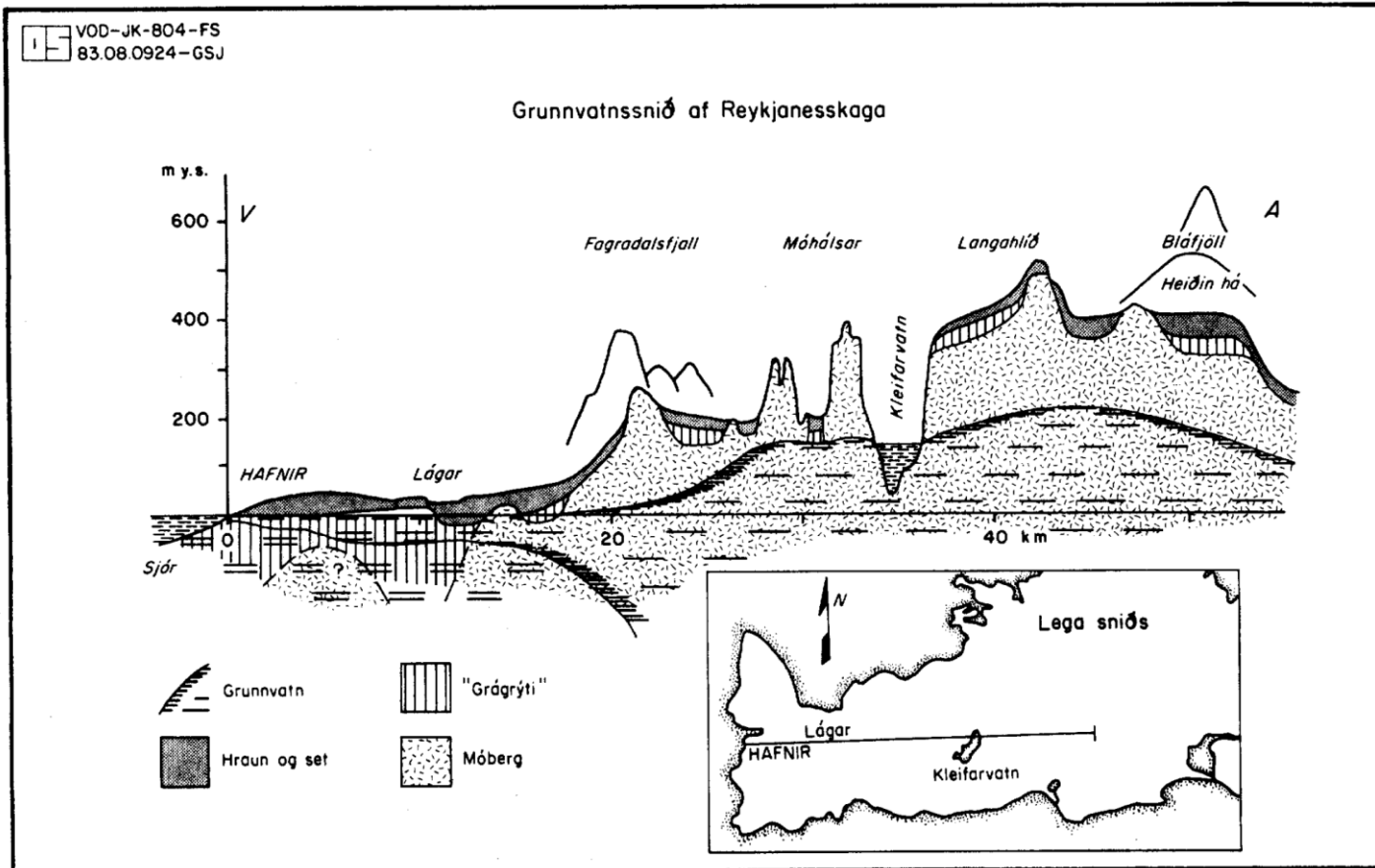


Flow paths are probably quite different from what has previously been put forward

Grunnvatnshlot - Water bodies

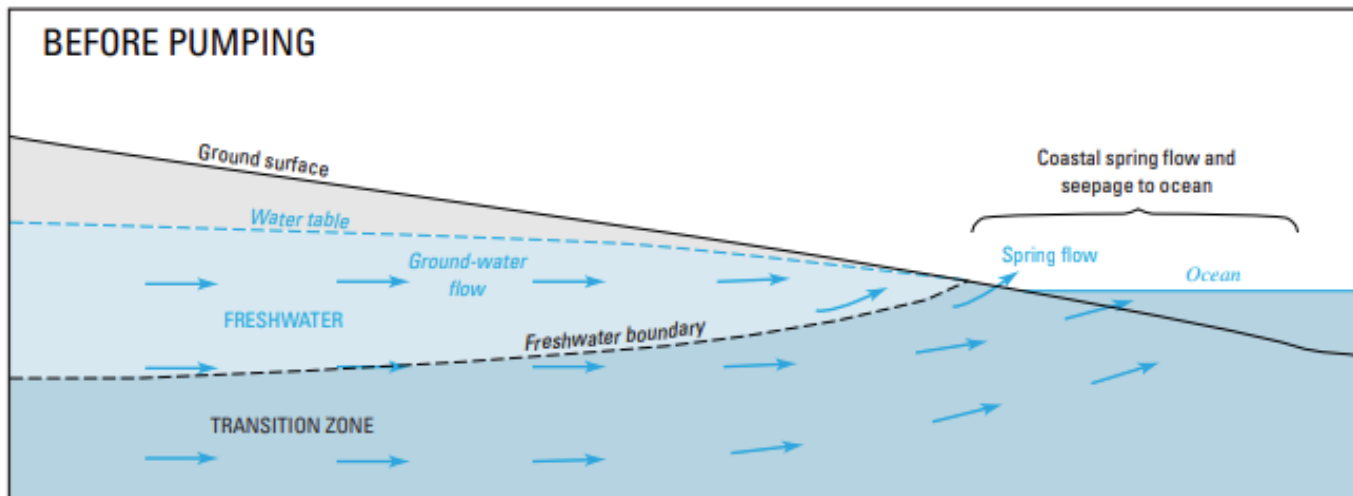


The Reykjanes ground water lens



Renewal and discharge

- Ákoma : 1100 mm á ári eða 10549 L/s
- Afrennsli : Lek berglög í sjó, 2%?
- Aðrennsli : Óþekkt



Next steps

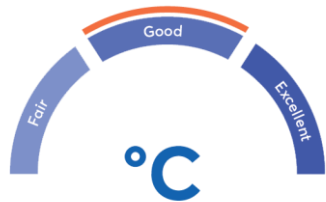
- Carry on monitoring current monitoring wells
- Add more monitoring wells especially in Reykjanes
- Find reserve water sources

Thank **you!**

HS Orka hf.

Svartsengi
240 Grindavík

Phone: +354 520-9300
Email: hsorka@hsorka.is



*CICERO
Dark Green



*CICERO
Shades of
Green

